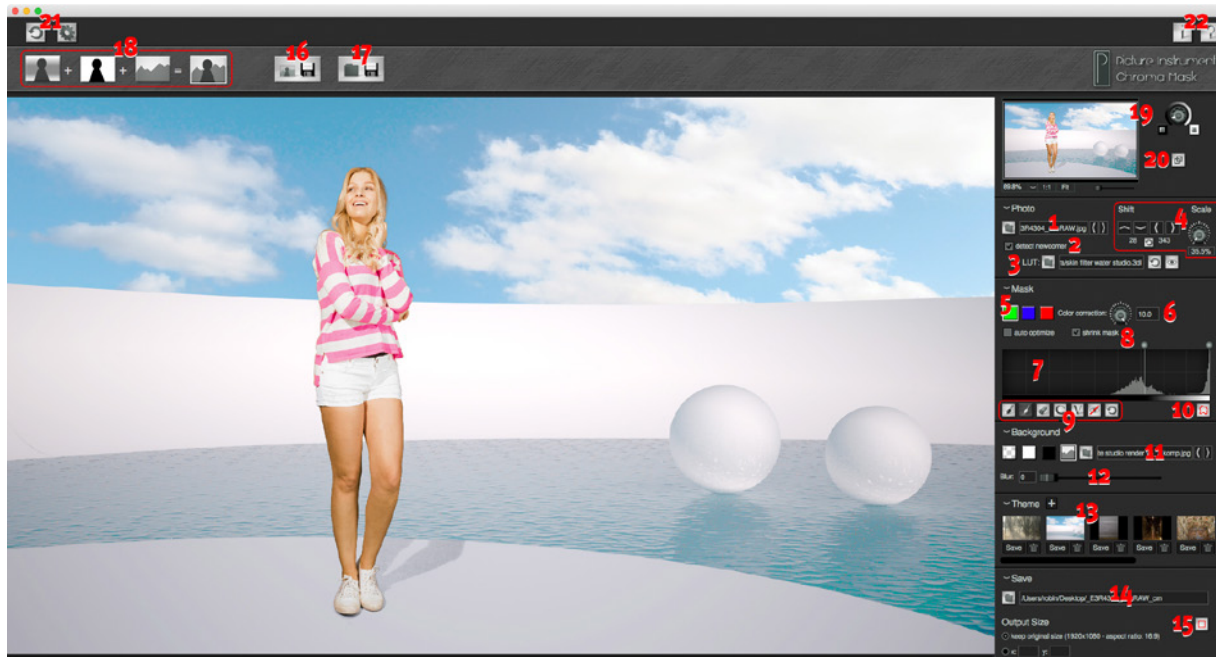


# Manual



## CHROMA MASK



1. Load Image
2. Detect Newcomer
3. Foreground LUT
4. Adjust Foreground Image to the Background Image
5. Chroma Key
6. Color Correction
7. Manual Mask Optimization
8. Shrink Mask
9. Brushes
10. The Edge Mode
11. Select Background
12. Background Blur
13. Themes
14. Select Folder and Size to Save Images
15. Boundary of Cropped Image
16. Save Single Image
17. Save Entire Folder
18. Viewing Options
19. The Navigator
20. External View
21. Reset-All & Settings
22. Info and Help

## 1. Load Image

Here an image is loaded which has been shot in front of a green blue or red background.

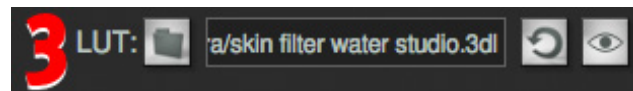


## 2. Detect Newcomer

Monitors the folder from which the image (item 1) was loaded. If "detect newcomer" is activated, every new image appearing in this folder (e.g. during tethered shooting) will be loaded and masked. Enhancements of the mask will be transferred to the new image.



## 3. Foreground LUT



Here you can load a lookup table (LUT) which will

be applied to the cropped foreground image. With a LUT you can correct colors or apply a look to the image. With the adjacent buttons you can reset or deactivate/activate the selected LUT. If the LUT is active, it will be automatically applied to new photos. The lookup table formats .3dl and .cube are supported. More information about LUTs and how to create them are in the manuals and video tutorials of our products Look Converter, Unlimited Filters and Color Cone.

## 4. Adjust Foreground Image to the Background Image

This feature changes the size of the masked image (image and mask) in relation to the background you have

selected. This feature is only available if a background image has been selected. As soon as you have selected a background image, the size of the output image will be fitted to the size of the background image. Since it is relatively arduous to adjust the foreground and background images via the command buttons, you can also use the mouse by pressing down the right mouse button or pressing the "alt" key. Note:



**Move image:** Right mouse click + move the mouse OR "alt" + left mouse click + move mouse

**Zoom:** Right mouse click + clickwheel OR "alt" + click wheel



**Chroma Mask keeps this setting until the software is closed or you delete it via the reset button. This is useful if you want to shoot an subject for a specific background. You only have to adjust your model once and then you can shoot and make changes to the lighting until you like the result with the selected background.**

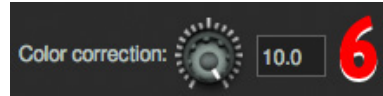
## 5. Chroma Key



Here you can select the color, which will become transparent in the target image. Green and blue are most common since skin color has a lot of reds. Therefore a red background is unsuitable for people photography. Yet still, a red background can be the solution for product photography with products that contain a lot of green and blue but no red.

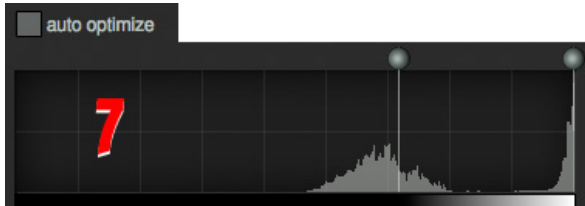
## 6. Color Correction

Here you can delete all interfering reflections the background color has on the subject - especially along the edges (Color Spill - for example: Green Spill).



***Our especially designed algorithm recovers the original colors of the subject while removing the color spill.***

## 7. Manual Mask Optimization



You can use the two drag points to adjust the black and white point of the mask, which have been calculated from

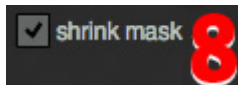
the keying color channel. Ideally the controls will be pulled together far enough so that all areas will be 100% transparent or 100% opaque (except the edges of the subject). See chapter 10 for more information.



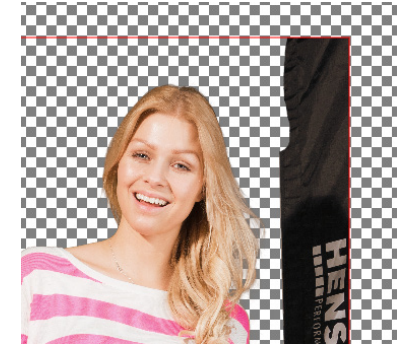
***If you load a new image, which has not been opened with Chroma Mask yet, the shrink mask setting will be transferred to the following image. This makes it possible for the "detect newcomer" feature to automatically and dependably mask any new images during a live shoot.***

## 8. Shrink Mask

Everything located outside of the Shrink Mask area will become 100% transparent. The boundary can be adjusted with the



mouse directly in the image. This makes it easy to delete any elements along the edges of the image (for example light formers). The boundary is only visible with a black, white or transparent background yet is still applied with a background image.



***If you load a new image, which has not been opened with Chroma Mask yet, the shrink mask setting will be transferred to the following image. This makes it possible for the "detect newcomer" feature to automatically and dependably mask any new images during a live shoot.***

## 9. Brushes



Use the black brush to paint in black over areas of the mask. These areas will become transparent in the final image. Use the white brush to paint over those areas that you want to become 100% opaque. Use the eraser tool to delete areas you have painted over with the brush. Use the "C" and "V" keys (copy and paste) to transfer painted areas from one mask to the mask of another image. This can save you a lot of work if the same elements have to be removed from a great number of pictures manually. The button depicting the eye symbol lets you display all areas you have painted over with the brush. The reset button lets you undo all of the edits you did with the brush.



***The size of the brush on the screen always remains the same. Zoom in and out of the picture to work***

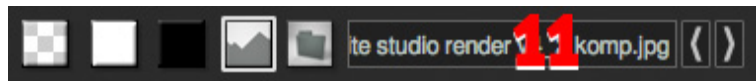
*more accurately or faster with the brush.*

## 10. The Edge Mode

Activate the edge mode to display all pixels that are not 100% black or white in the mask (meaning that they will be neither transparent nor opaque in the resulting picture). With the exception of semitransparent subjects, the edge mode should only color the edges of the masked subject, i.e. the transitions between the fore- and background, in pink. If you have to identify very thin edges or glass it may be advisable to set the black and white points so that the area tightly around the subject to be masked is 100% transparent. In this case, in the edge mode you can see the areas that are not yet 100% transparent tinted in pink and you are then able to remove them with the brush (chapter 9).



## 11. Select Background



Here you can select a background

for your masked subject. You can choose between transparent, black, white and a custom image of your choice. When choosing one of the first three options the size of the output image will be the size of the original image. If you select a background image from your computer, the size of the output image will automatically adjust to the size of the background image. Use the arrow keys to skip through the images that are located in the same folder as your background image. If you choose a transparent background it will only remain transparent if the format you select

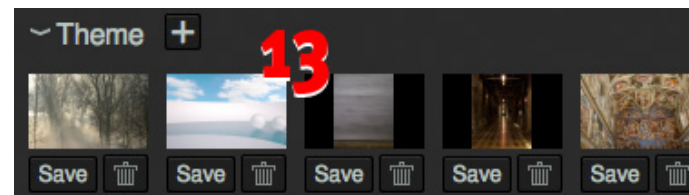
to save your images supports transparency (i.e. PNG or TIFF). You can select the output format in the settings (chapter 21).

## 12. Background Blur

Use this slider to separate the foreground from the background by blurring the background.



## 13. Themes



Chroma Mask has now the option to save the combination of the selected background

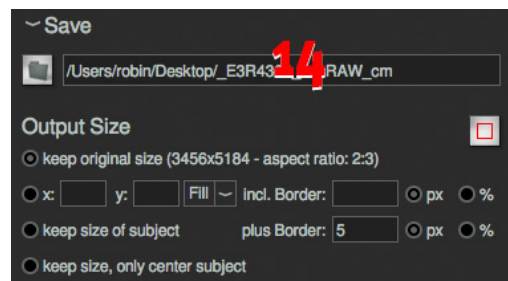
photo and the selected lookup table (see chapter 3) as a theme. The "+" icon adds the current combination of both as a theme and the "Save" button below each preview thumb overwrites the respective theme. You can delete a theme via the respective trash icon. Themes are really helpful for portrait and people photographers to perform themed shootings. Depositing a LUT for matching the colors of the foreground to the background results in a harmonic composition of foreground and background automatically while shooting. This means that your customers can see the finished composition immediately after choosing a theme. New photos which are loaded with the „detect newcomer“ function (chapter 2) will automatically be adjusted with the loaded LUT.



## 14. Select Folder and Size to Save Images

Here you can select the folder where Chroma Mask saves the output images. The images will actually be saved with the command buttons 16 and 17.

### Output Size



**„keep original size“:** Saves the masked images in it's original size. For the following options the boundary of the cropped image is significant (chapter 15).

**„x\_\_ y\_\_ Fit/Fill“:** Fits the cropped image into the specified size (independent of size or aspect ratio of the original image). The subject will be scaled down by the size of the selected border. **„Fit“** produces an image with the aspect ratio of the cropped subject with the same size border around. **„Fill“** adds background to have all images in the same specified size.

**„keep size of subject“:** Crops the subject without scaling it. If you set a border it will be added around the subject.

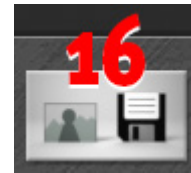
**„keep size, only center subject“:** Centers the cropped image within the original size of the full image without scaling it.

## 15. Boundary of Cropped Image

This Button shows the boundary of the cropped image. All pixels outside are 100% transparent. It is relevant for all output size settings but the first.



## 16. Save Single Image



This saves the current output image to the folder selected in chapter 14. All file formats that have been activated (chapter 21) in the settings will be saved.

## 17. Save Entire Folder



Works similar to chapter 16 but the output images of all pictures (just like the currently open output image) will be saved successively. It is advisable to use this feature if you are processing a great number of images. This will enable you to do all of your adjustments in one pass and then save all output images in one go.

## 18. Viewing Options

Here you can choose which image you want to display in the main window. From left to right the symbols stand for:



Normal exposed image, mask (will be created based on the chosen color channel), background image and output image.

Sometimes it can be better to select the mask view and other times the output image view to fine-tune the mask.

The output image will be saved no matter which viewing option is selected.

## 19. The Navigator



The navigator contains all settings for the view in the main window. None of the settings have any influence on the saved output image. Although navigation is done with the mouse, at times it can be useful to fit the image with the “fit” button below the small viewer or select the original resolution with the “1:1” button. Both features are also available via shortcuts (see chapter 22).

Use the wheel control to adjust the brightness of the background of the main window. A different brightness of the image sometimes helps in identifying its edges.

## 20. External View

With this button you can open a second window with the resulting image. You can place the external window e.g. on a second monitor for a customer preview.



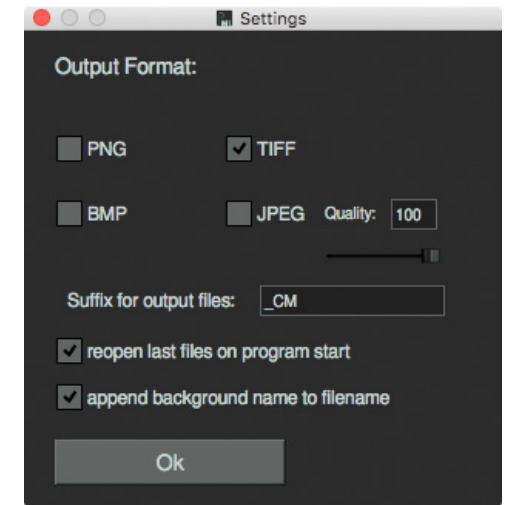
## 21. Reset-All & Settings



The reset-all button will purge all images and settings currently open in Chroma Mask. Simultaneously all adjustments you have made to images that are contained

within the same folder will be deleted (by deleting the .brush file). The images itself will not be deleted from your disk.

In the settings you can choose the format in which you want to save your output images. If you select several formats, the output image will be saved in all of the selected formats when you press the command buttons 16 or 17. Please note that the formats .jpg and .bmp can't save any transparencies. We therefore recommend using the formats .png and .tiff.



You can choose an individual suffix for your output images and if you want you can add a description of the chosen background to your output file name.

„reopen last...” opens the images on program start which you had open as you closed Chroma Mask.

## 22. Info and Help

In the info window you can find more information on the version of Chroma Mask and the license you use.



The help window contains a link to our Chroma Mask tutorial videos as well as shortcuts you can use to make your workflow more efficient.

More information and video-tutorials available on:  
[www.picture-instruments.com](http://www.picture-instruments.com)

Picture  
© Instruments

