

Picture Instruments

TIME FIX

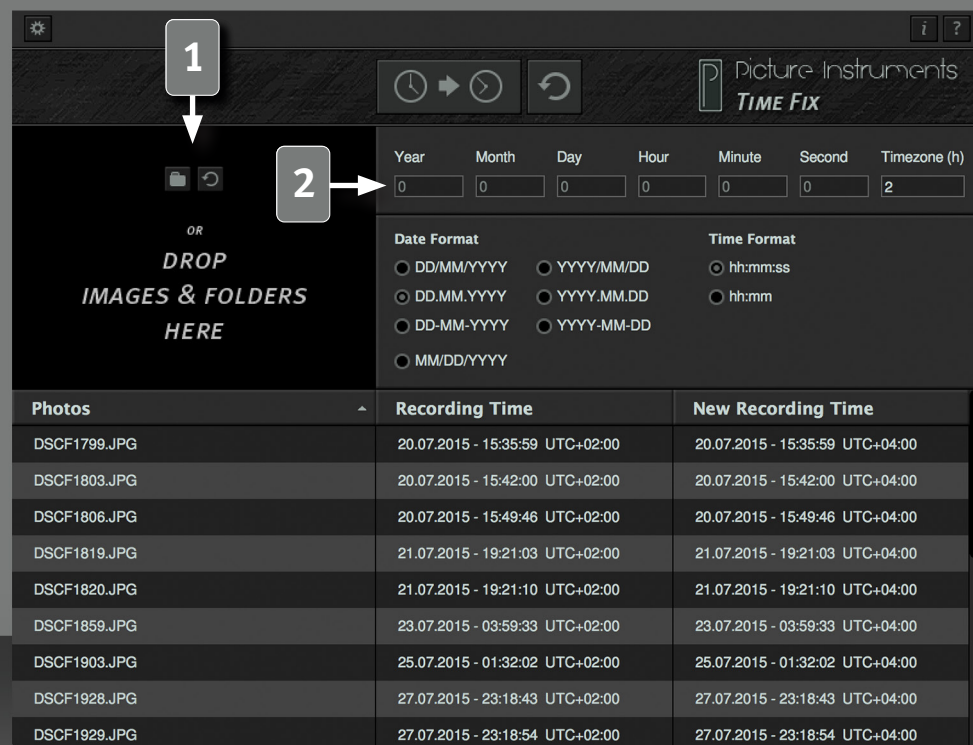


Manual



TIME FIX

Manual



2

Time Fix lets you change the date, time and timezone of images that were shot with an incorrect camera time easily.

Load Images

- 1 You can drag single images or even entire folders onto the black area. You can also open images via the folder icon. Use the circular arrow to empty your list.

Time Difference

- 2 Use the respective fields to determine by how many years, months, days, hours or seconds you want to push the shooting time of the images you opened back or forth. You can use the Timezone field to define by how many hours the time zone should be corrected.

Negative values will change the time of an image to an earlier time, positive values will change it to a later time. You may combine positive and negative values (i.e. -2 days, +3 hours). It is irrelevant which field you use to enter the time difference. -25 hours will push the time stamp back by a day and one hour. The time difference and the time zone work independently from each other and will not influence each other.

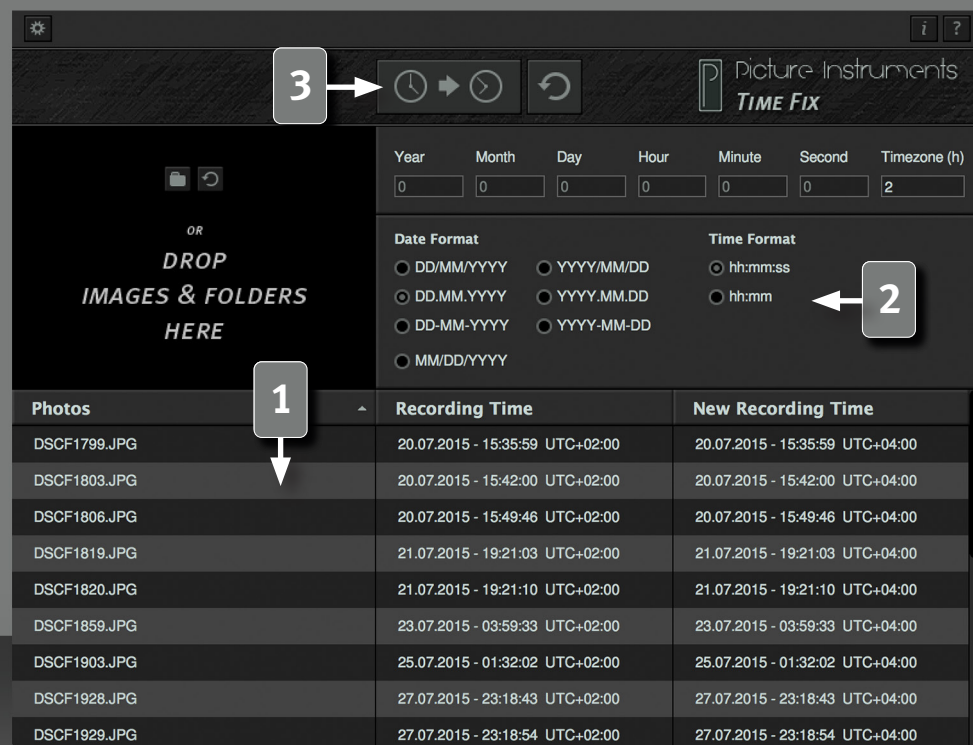


If an image contains no information on its time zone, the value from the field "Timezone" will be saved to this image. A "zero" in an image without time zone information would cause the image to be set to "UTC 0". If the field "Timezone" remains empty, the current time zone of the operating system will be written into this field.

The values you insert will interactively change the preview of the new shooting time in your list view. The actual correction will only occur if you use the button with the two clock symbols.

TIME FIX

Manual



3

List View

1 The list displays all loaded images including the shooting time and a preview of the shooting time you wish to correct. You can change the order of the list from file name to shooting time in increasing or decreasing order by clicking on the headline.

Time and Date Format

2 Here you can adjust your date format to your regional conditions. This is only relevant for your list view. The EXIF-data will not be affected. For a better overview you can hide the seconds in the time format option of your list.



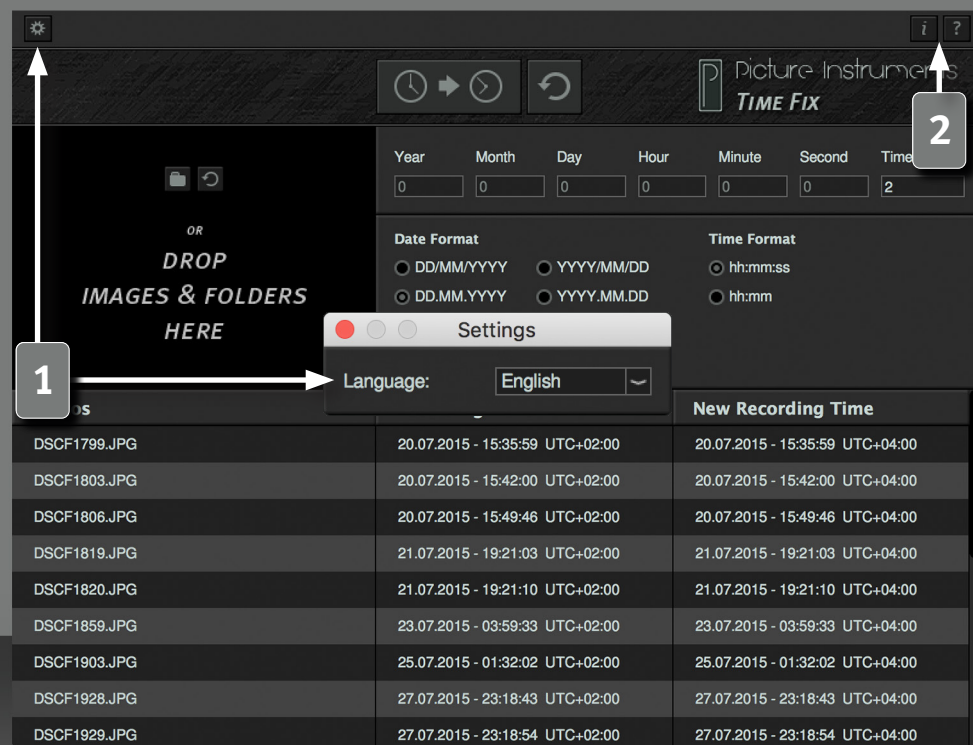
In the EXIF-data the seconds will be saved anyways.

Change the Shooting Time

3 Use this button to adjust the EXIF-data to what is displayed in the list under "New Recording Time". You can undo premature changes via the undo button to the right. The undo option only works as long as the program has not been closed and no other images have been changed.

TIME FIX

Manual



Settings

1

Here you can change the language of the user interface.

Information and Help

2

In the info window you can find more information on the version of Time Fix and the license you use.

The help window contains a link to our Time Fix tutorial videos as well as information on all shortcuts you can use to make your workflow more efficient.

Supported File Formats

360, 3g2, 3gp, 3gp2, 3gpp, aax, ai, ait, apng, arq, arw, avif, ciff, cr2, cr3, crm, crw, cs1, dcp, dng, dr4, dvb, eps, eps2, eps3, epsf, erf, exif, exv, f4a, f4b, f4p, f4v, fff, flif, gif, gpr, hdp, heic, heif, hif, icc, icm, iiq, ind, indd, indt, insp, j2k, jng, jp2, jpe, jpeg, jpf, jpg, jpm, jps, jpx, jxl, jxr, lrv, m4a, m4b, m4p, m4v, mef, mie, mng, mos, mov, mp4, mpo, mqv, mrw, nef, nrw, orf, ori, pbm, pdf, pef, pgm, png, ppm, ps, ps2, ps3, psb, psd, psdt, qt, raf, raw, rw2, rwl, sr2, srw, thm, tif, tiff, vrd, wdp, x3f, xmp

More information and video-tutorials at:

www.picture-instruments.com

Picture Instruments



www.picture-instruments.com