

Picture Instruments

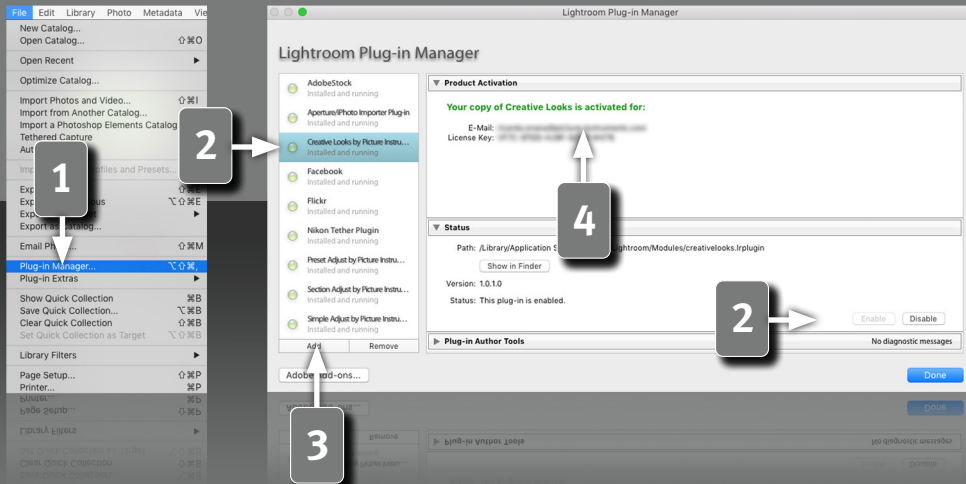
CREATIVE LOOKS

Manual



CREATIVE LOOKS

Manual



2

Requirements

This plugin works with Lightroom version 6 and newer. You need the Classic version of newer Lightroom versions, since the plugins aren't supported in the Cloud version.

Installation and plugin activation

- 1 The plugin will appear in the Lightroom Classic "Plug-in Manager" after the successful installation. (File->Plug-in Manager).
- 2 If the LED next to the plugin is gray, the plugin has to be activated first in the status section.
- 3 In rare cases the plugin won't appear in the "Plug-in Manager" after the installation. In that case you have to add it manually. You do that by clicking on the "Add" button, after which a dialog window will open, where you can select the plugin.



After the installation you can find the plugin under:

Mac:

Library/Application Support/Adobe/Lightroom/Modules

Windows:

%appdata%/Adobe/Lightroom/Modules

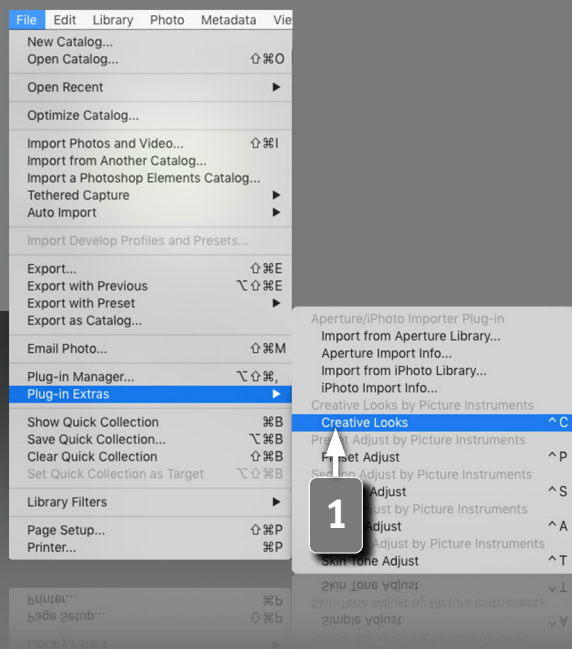
Maybe you have to restart Lightroom.

License activation

- 4 After the installation and activation of the plugin you have to enter your personal license code in combination with your associated email address. The "Plug-in Manger" can be closed after the successful activation of the license.

CREATIVE LOOKS

Manual



The ultimate source for looks in Lightroom

To help you get professional results every time, we've analyzed the looks of Hollywood's most popular movies, influencers, and commercial photographers and packed them into this easy-to-use tool. We discovered that there are some key elements that are frequently used in image editing. These include elements, such as sky blue and plant green, or working with composite colors. We've dedicated sliders to each of these key elements of modern image editing, so you can create outstanding images quickly and easily, even without automatic look generation.

Opening the plugin

1 The plugin can be used via the shortcut CTRL+C or via the main menu **File -> Plug-in Extras**

Shortcuts only work on Mac OS X.

CREATIVE LOOKS

Manual



Inspiration at the push of a button

- 1** Even while you open Creative Looks, the plugin suggests the first look. If you don't like the look, you can always use the Inspire button to be inspired further.
- 2** If you click the „Inspire“ button too fast, the last generated looks are not lost. With the Undo and Redo buttons you can go back up to 10 inspirations and then of course go forward again.
- 3** You can save looks that you like in one of the 10 caches. To do this, simply click on the „S“ under the respective number under which you want to save the look - by the way, S stands for Save.
- 4** By clicking on the number itself, you can recall the look later. The caches are preserved even when you close the plugin or Lightroom.

CREATIVE LOOKS

Manual



5

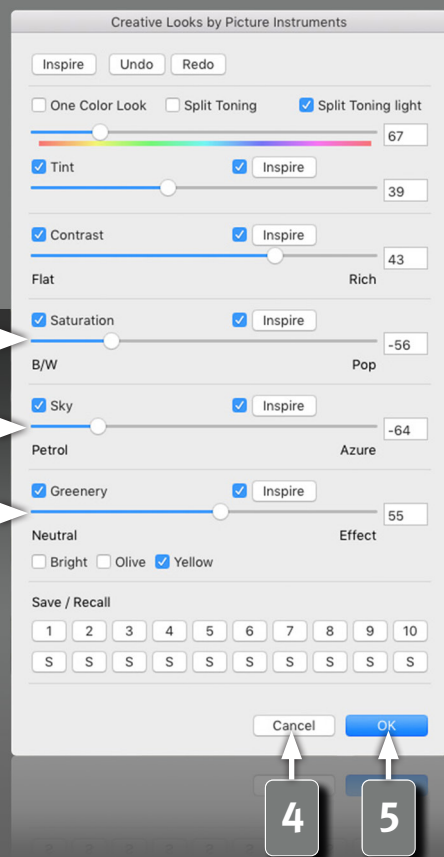
Functions for precise optimization of the look

Three checkboxes let you choose a mode for coloring the image.

- 1 If you choose a „One Color Look“, the image will be tinted with the same hue in all brightness ranges.
- 2 In the two „split toning“ variants, a complementary color contrast is created whereby the Hue control is decisive for the darker image areas and the light image areas are colored with the color opposite on a color wheel. This corresponds to a difference of 180° on our „Hue“ slider. So if the slider is set to red, for example, the shadows are colored red and at the same time the highlights are colored blue.
- 3 The „Hue“ slider sets the color of the toning.
- 4 The „Tint“ slider defines the strength of the tint.
- 5 Unlike conventional contrast controls, the Creative Looks slider for contrast creates a look reminiscent of analog film footage. In the negative range you create a soft, filmic contrast, and in the positive range you create a detailed, crisp contrast.

CREATIVE LOOKS

Manual



6

- 1 The „Saturation“ slider allows you to control the appearance of the look from black/white to bright and colorful.
- 2 The “Sky” slider shifts the blue shades of the sky either towards petrol or azure.
- 3 You can use the checkboxes in the „Greenery” section to choose whether you want a bright green, an olive or an autumn-like, yellow-brownish effect for the plant green in your image. You can then use the slider to control the strength of the selected effect.
- 4 “Cancel” closes the plugin and restores Lightroom to the state it was in before the plugin was opened.
- 5 You can close the plugin after all adjustments have been made by clicking „OK” and continue working with the selected settings in Lightroom.

Picture Instruments



www.picture-instruments.com